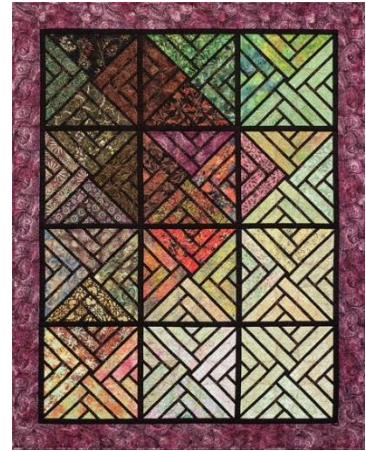


Fractured Paint Box

Finished size: 60" x 77"



Supplies:

- **Quiltworx Fractured Paint Box pattern**, \$30.50 available from:
 - Local quilt shop or
 - Numerous online vendors including Quiltworx.com or
 - JH Quilt Designs (email below)
- **Sewing Machine with basic supplies** (scissors, ripper, thread, bobbins, pins, power cord, etc)
- **Open toe (applique) foot and/or 1/4" foot** - you need good visibility of the needle as you sew on the foundation paper lines
- **Fabrics** - pre-cut per following directions
- **Cutting mat** - 12" x 18" is a good size to bring
- **Rotary cutter with a new blade** - 60mm (the big one) is my favorite but any size will work
- **Medium sized rotary cutting ruler** - 6" x 12" or similar
- **12" Add-A-Quarter ruler** (yellow or pink)
- **Fabric glue pen with 2 refills** (i.e., Sewline, Fons and Porter)
- **Fold template:** 3" x 12" piece of template plastic or card stock
- **Microtex sewing machine needles** (Size 70/10)
- **5 2-gallon zip bags**
- **~150-200 Jumbo plastic-coated paper clips**

Layout Alternatives: You can select any of the following layouts. Fabric requirements and pre-class cutting instructions are provided for each on following pages.



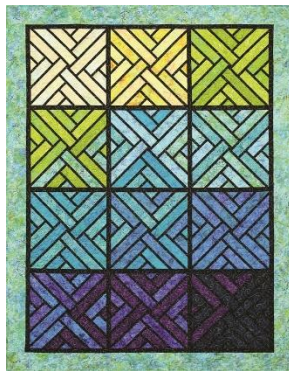
Diagonal Gradient



Clustered



On Point Square



Square Gradient

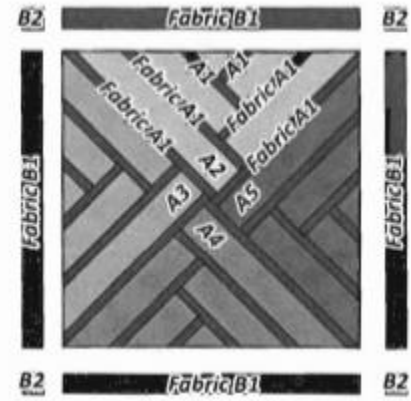


Mixed

A few notes to be aware of when selecting your fabrics:

- All of these layouts require 48 @ 2-1/2" strips for the block focal fabrics.
- The accent within the blocks can be any fabric but traditionally these are either solid (or solid-ish) black or white so they accentuate the stained glass look.
- The top is assembled with cornerstones at the ends of the sashings between blocks, This is visible in the Clustered layout. You can choose to have contrasting cornerstones or use the same fabric as your sashings (as in the other four layouts).

Fabric Requirements: Yardages needed for the project are shown in the table below. Fabric numbers are keyed to the Color Layout diagram to the right.



Fabric	Fabric Number	Layout	Fabric Required
Block Accent	A1	All	1-3/4 yards
Block Focal	A2	Diagonal Gradient	48 <u>different</u> 2-1/2" strips (values ranging from light to medium dark) - these can be cut from your stash or you can use a Quiltworx 2-1/2" Strip Set which come with 48 different strips
		Clustered	
	A3	On Point Square	1/3 yard of 6 medium to medium dark fabrics
	A4		1/3 yard of 9 light to medium light fabrics
	A5	Square Gradient	1/3 yard of 16 fabrics (values ranging from light to medium dark)
		Mixed	
Sashing	B1	All	3/4 yard
Cornerstones	B2	All	1/8 yard
Border	B3	All	2 yards ***
Binding		All	3/4 yard ***
Backing		All	5 yards ***

*** Not needed for class

Pre-Class Preparation: Please complete the following prior to coming to class.

Zip bag preparation: Label your zip bags #1 through #6. It can also helpful to include the pattern name or an abbreviation (FPB for Fractured Paint Box) on the label. (Note: The pattern says to use 2 zip bags. We will use 6.)

Fabric preparation: Press and starch your fabrics, if desired. I like to use Faultless Heavy Starch, Lavender scent. Best Press is another great option. If you are using a 2-1/2" strip set, you probably do not need to press and starch. Cut your fabrics and place in the Zip bag indicated below.

Fabric	Fabric Number	Layout	Cut	Bag
Block Accent	A1	All	12 @ 5" x 42" strips	#5
Block Focal		Diagonal Gradient	No cutting required	Put 12 strips each into Bags #1 - #4**
		Clustered		
	A2 A3 A4 A5	On Point Square	3 @ 2-1/2" x 42" strips from your 6 medium to medium dark fabrics	Put all the strips in Bag #1
			4 @ 2-1/2" x 42" strips from your 3 lightest fabrics	
			3 @ 2-1/2" x 42" strips from the remaining 6 of your light to medium light fabrics	
		Square Gradient	3 @ 2-1/2" x 42" strips from each of your 16 fabrics	Put all the strips in Bag #1
Mixed				
Sashing	B1	All	4 @ 6" x 42" strips	#6
Cornerstones	B2	All	1 @ 1-1/2" x 42" strip	#6

** It does not matter which strips go into each bag for these two layouts. Just any 12 strips in each bag works perfect.

Newsprint preparation: Unfold the 9 newsprint pages from your pattern. Trim 1/8" around the units (freehand or with a rotary cutting ruler) and place in the Zip bags indicated below. Leave the Assembly Layout Graphics in one piece.

Unit	Number	Bag
Unit FPB	48	Clip into 4 groups of 12 and place one group into Bags #1 - #4
Temp FB-1, FB-2, FB-3, FB-4 and FB-5	8 each	Clip into 8 sets with 1 of each of the 5 Temps in each set; place 2 sets into Bags #1 - #4
Unit FPB Accent TLS-1, 2 and 3	1 each	#5
T-Template B1 and B2	1 each	#6
Assembly Layout Graphics	1 each	#6

Note: This pre-class preparation will assist you (and me) in making the most progress during class. I will start my instruction with the assumption that this preparation work is completed. I understand that sometimes life gets in the way and we are not always as prepared for class as we want to be. If that happens to you, please don't let that stop you from coming to class! I will get you up to speed as quickly as I can. Just know that I will keep the rest of the class moving forward first. Please feel free to email me if you have any questions!!